



MIDDLE SCHOOL



مدارس سعود العالمية
Saud International School

GRADE 7

A Guide to Parents



TABLE OF CONTENTS

WELCOME MESSAGE.....	Page 1
MISSION & VISION.....	Page 2
SCHOOL CALENDAR.....	Page 3
SCHOOL TIMING.....	Page 4
BOOKLIST.....	Page 5-6
SCHOOL UNIFORM	Page 7-8
SCHOOL SUPPLIES LIST.....	Page 9
GUIDE TO REPORT CARDS.....	Page 10-13
GUIDE TO LMS.....	Page 14
CONTACT DETAILS.....	Page 15



WELCOME MESSAGE

Dear Parents,

Greetings from Saud International School!

We would like to welcome you to the new academic year 2023–2024 at Saud International School.

With the beginning of this new academic year, Saud International School stands out to deliver the most efficient learning experience bringing new opportunities to develop our students' growth, abilities, and talents.

Our dedicated teachers are passionately committed to deliver the best of their knowledge and experience together with a unique curriculum in order to ensure a positive, engaging, and challenging educational journey throughout this academic year.

Saud International School will always strive to guarantee that students receive an advanced level of learning in a positive environment whilst being supported, appreciated, and respected.



WELCOME MESSAGE

Saud International School, established in 1998, is an American and British Curriculum School that places high value on the individual, an ethos underpinned by our belief that our school provides an ideal atmosphere for nurturing the talents and needs of young students.

VISION STATEMENT

The vision of Saud International School is to create a supportive environment enabling us to equip our students with skills and abilities which will allow them to develop intellectually, physically, socially, emotionally and morally as they become successful and productive lifelong learners in the 21st Century.

MISSION STATEMENT

The mission of Saud International School is to provide a challenging educational environment that meets the needs of the diverse community by offering a worldwide known curriculum implemented with state of the art technology along with extra-curricular activities.



ACADEMIC CALENDAR 2023-2024

	School Resumes
	First Day
	Last Day
	Holidays / No School

	Examinations
	Retake Exams
	Progress Report / School Report Distribution
	PTC
	Professional Development Day for Staff

<div>13 August</div> <div>First Day for Teachers</div> <div>20 August</div> <div>First Day for Students</div>	<div>August 2023</div> <table><tr><th>S</th><th>M</th><th>T</th><th>W</th><th>T</th><th>F</th><th>S</th></tr><tr><td></td><td></td><td>1</td><td>2</td><td>3</td><td>4</td><td>5</td></tr><tr><td>6</td><td>7</td><td>8</td><td>9</td><td>10</td><td>11</td><td>12</td></tr><tr><td>13</td><td>14</td><td>15</td><td>16</td><td>17</td><td>18</td><td>19</td></tr><tr><td>20</td><td>21</td><td>22</td><td>23</td><td>24</td><td>25</td><td>26</td></tr><tr><td>27</td><td>28</td><td>29</td><td>30</td><td>31</td><td></td><td></td></tr></table> <div>10</div>	S	M	T	W	T	F	S			1	2	3	4	5	6	7	8	9	10	11	12	13	14	15	16	17	18	19	20	21	22	23	24	25	26	27	28	29	30	31			<div>February 2024</div> <table><tr><th>S</th><th>M</th><th>T</th><th>W</th><th>T</th><th>F</th><th>S</th></tr><tr><td></td><td></td><td></td><td></td><td>1</td><td>2</td><td>3</td></tr><tr><td>4</td><td>5</td><td>6</td><td>7</td><td>8</td><td>9</td><td>10</td></tr><tr><td>11</td><td>12</td><td>13</td><td>14</td><td>15</td><td>16</td><td>17</td></tr><tr><td>18</td><td>19</td><td>20</td><td>21</td><td>22</td><td>23</td><td>24</td></tr><tr><td>25</td><td>26</td><td>27</td><td>28</td><td>29</td><td></td><td></td></tr></table> <div>15</div>	S	M	T	W	T	F	S					1	2	3	4	5	6	7	8	9	10	11	12	13	14	15	16	17	18	19	20	21	22	23	24	25	26	27	28	29			<div>22 February</div> <div>Founding Day</div> <div>25 February - 29 February</div> <div>Second Semester Vacation</div>														
S	M	T	W	T	F	S																																																																																															
		1	2	3	4	5																																																																																															
6	7	8	9	10	11	12																																																																																															
13	14	15	16	17	18	19																																																																																															
20	21	22	23	24	25	26																																																																																															
27	28	29	30	31																																																																																																	
S	M	T	W	T	F	S																																																																																															
				1	2	3																																																																																															
4	5	6	7	8	9	10																																																																																															
11	12	13	14	15	16	17																																																																																															
18	19	20	21	22	23	24																																																																																															
25	26	27	28	29																																																																																																	
<div>24 September</div> <div>National Day</div>	<div>September 2023</div> <table><tr><th>S</th><th>M</th><th>T</th><th>W</th><th>T</th><th>F</th><th>S</th></tr><tr><td></td><td></td><td></td><td></td><td></td><td>1</td><td>2</td></tr><tr><td>3</td><td>4</td><td>5</td><td>6</td><td>7</td><td>8</td><td>9</td></tr><tr><td>10</td><td>11</td><td>12</td><td>13</td><td>14</td><td>15</td><td>16</td></tr><tr><td>17</td><td>18</td><td>19</td><td>20</td><td>21</td><td>22</td><td>23</td></tr><tr><td>24</td><td>25</td><td>26</td><td>27</td><td>28</td><td>29</td><td>30</td></tr><tr><td></td><td></td><td></td><td></td><td></td><td></td><td></td></tr></table> <div>20</div>	S	M	T	W	T	F	S						1	2	3	4	5	6	7	8	9	10	11	12	13	14	15	16	17	18	19	20	21	22	23	24	25	26	27	28	29	30								<div>March 2024</div> <table><tr><th>S</th><th>M</th><th>T</th><th>W</th><th>T</th><th>F</th><th>S</th></tr><tr><td></td><td></td><td></td><td></td><td></td><td>1</td><td>2</td></tr><tr><td>3</td><td>4</td><td>5</td><td>6</td><td>7</td><td>8</td><td>9</td></tr><tr><td>10</td><td>11</td><td>12</td><td>13</td><td>14</td><td>15</td><td>16</td></tr><tr><td>17</td><td>18</td><td>19</td><td>20</td><td>21</td><td>22</td><td>23</td></tr><tr><td>24</td><td>25</td><td>26</td><td>27</td><td>28</td><td>29</td><td>30</td></tr><tr><td>31</td><td></td><td></td><td></td><td></td><td></td><td></td></tr></table> <div>20</div>	S	M	T	W	T	F	S						1	2	3	4	5	6	7	8	9	10	11	12	13	14	15	16	17	18	19	20	21	22	23	24	25	26	27	28	29	30	31							<div>3 March</div> <div>Third Semester - First Day</div> <div>28 March</div> <div>Last Day</div> <div>31 March - 14 April</div> <div>Eid Holiday</div>
S	M	T	W	T	F	S																																																																																															
					1	2																																																																																															
3	4	5	6	7	8	9																																																																																															
10	11	12	13	14	15	16																																																																																															
17	18	19	20	21	22	23																																																																																															
24	25	26	27	28	29	30																																																																																															
S	M	T	W	T	F	S																																																																																															
					1	2																																																																																															
3	4	5	6	7	8	9																																																																																															
10	11	12	13	14	15	16																																																																																															
17	18	19	20	21	22	23																																																																																															
24	25	26	27	28	29	30																																																																																															
31																																																																																																					
	<div>October 2023</div> <table><tr><th>S</th><th>M</th><th>T</th><th>W</th><th>T</th><th>F</th><th>S</th></tr><tr><td>1</td><td>2</td><td>3</td><td>4</td><td>5</td><td>6</td><td>7</td></tr><tr><td>8</td><td>9</td><td>10</td><td>11</td><td>12</td><td>13</td><td>14</td></tr><tr><td>15</td><td>16</td><td>17</td><td>18</td><td>19</td><td>20</td><td>21</td></tr><tr><td>22</td><td>23</td><td>24</td><td>25</td><td>26</td><td>27</td><td>28</td></tr><tr><td>29</td><td>30</td><td>31</td><td></td><td></td><td></td><td></td></tr></table> <div>23</div>	S	M	T	W	T	F	S	1	2	3	4	5	6	7	8	9	10	11	12	13	14	15	16	17	18	19	20	21	22	23	24	25	26	27	28	29	30	31					<div>April 2024</div> <table><tr><th>S</th><th>M</th><th>T</th><th>W</th><th>T</th><th>F</th><th>S</th></tr><tr><td></td><td>1</td><td>2</td><td>3</td><td>4</td><td>5</td><td>6</td></tr><tr><td>7</td><td>8</td><td>9</td><td>10</td><td>11</td><td>12</td><td>13</td></tr><tr><td>14</td><td>15</td><td>16</td><td>17</td><td>18</td><td>19</td><td>20</td></tr><tr><td>21</td><td>22</td><td>23</td><td>24</td><td>25</td><td>26</td><td>27</td></tr><tr><td>28</td><td>29</td><td>30</td><td></td><td></td><td></td><td></td></tr></table> <div>12</div>	S	M	T	W	T	F	S		1	2	3	4	5	6	7	8	9	10	11	12	13	14	15	16	17	18	19	20	21	22	23	24	25	26	27	28	29	30					<div>31 March - 14 April</div> <div>Eid Holiday</div> <div>15 April</div> <div>Third Semester - School Resumes</div>														
S	M	T	W	T	F	S																																																																																															
1	2	3	4	5	6	7																																																																																															
8	9	10	11	12	13	14																																																																																															
15	16	17	18	19	20	21																																																																																															
22	23	24	25	26	27	28																																																																																															
29	30	31																																																																																																			
S	M	T	W	T	F	S																																																																																															
	1	2	3	4	5	6																																																																																															
7	8	9	10	11	12	13																																																																																															
14	15	16	17	18	19	20																																																																																															
21	22	23	24	25	26	27																																																																																															
28	29	30																																																																																																			
<div>2 November</div> <div>Long Weekend</div> <div>19 November - 23 November</div> <div>First Semester Vacation</div> <div>16 November</div> <div>Last Day of Semester 1</div> <div>26 November</div> <div>Second Semester - First Day</div>	<div>November 2023</div> <table><tr><th>S</th><th>M</th><th>T</th><th>W</th><th>T</th><th>F</th><th>S</th></tr><tr><td></td><td></td><td></td><td>1</td><td>2</td><td>3</td><td>4</td></tr><tr><td>5</td><td>6</td><td>7</td><td>8</td><td>9</td><td>10</td><td>11</td></tr><tr><td>12</td><td>13</td><td>14</td><td>15</td><td>16</td><td>17</td><td>18</td></tr><tr><td>19</td><td>20</td><td>21</td><td>22</td><td>23</td><td>24</td><td>25</td></tr><tr><td>26</td><td>27</td><td>28</td><td>29</td><td>30</td><td></td><td></td></tr></table> <div>16</div>	S	M	T	W	T	F	S				1	2	3	4	5	6	7	8	9	10	11	12	13	14	15	16	17	18	19	20	21	22	23	24	25	26	27	28	29	30			<div>May 2024</div> <table><tr><th>S</th><th>M</th><th>T</th><th>W</th><th>T</th><th>F</th><th>S</th></tr><tr><td></td><td></td><td></td><td>1</td><td>2</td><td>3</td><td>4</td></tr><tr><td>5</td><td>6</td><td>7</td><td>8</td><td>9</td><td>10</td><td>11</td></tr><tr><td>12</td><td>13</td><td>14</td><td>15</td><td>16</td><td>17</td><td>18</td></tr><tr><td>19</td><td>20</td><td>21</td><td>22</td><td>23</td><td>24</td><td>25</td></tr><tr><td>26</td><td>27</td><td>28</td><td>29</td><td>30</td><td>31</td><td></td></tr></table> <div>21</div>	S	M	T	W	T	F	S				1	2	3	4	5	6	7	8	9	10	11	12	13	14	15	16	17	18	19	20	21	22	23	24	25	26	27	28	29	30	31		<div>2 May</div> <div>Long Weekend</div>														
S	M	T	W	T	F	S																																																																																															
			1	2	3	4																																																																																															
5	6	7	8	9	10	11																																																																																															
12	13	14	15	16	17	18																																																																																															
19	20	21	22	23	24	25																																																																																															
26	27	28	29	30																																																																																																	
S	M	T	W	T	F	S																																																																																															
			1	2	3	4																																																																																															
5	6	7	8	9	10	11																																																																																															
12	13	14	15	16	17	18																																																																																															
19	20	21	22	23	24	25																																																																																															
26	27	28	29	30	31																																																																																																
<div>17 December</div> <div>Long Weekend</div>	<div>December 2023</div> <table><tr><th>S</th><th>M</th><th>T</th><th>W</th><th>T</th><th>F</th><th>S</th></tr><tr><td></td><td></td><td></td><td></td><td></td><td>1</td><td>2</td></tr><tr><td>3</td><td>4</td><td>5</td><td>6</td><td>7</td><td>8</td><td>9</td></tr><tr><td>10</td><td>11</td><td>12</td><td>13</td><td>14</td><td>15</td><td>16</td></tr><tr><td>17</td><td>18</td><td>19</td><td>20</td><td>21</td><td>22</td><td>23</td></tr><tr><td>24</td><td>25</td><td>26</td><td>27</td><td>28</td><td>29</td><td>30</td></tr><tr><td>31</td><td></td><td></td><td></td><td></td><td></td><td></td></tr></table> <div>20</div>	S	M	T	W	T	F	S						1	2	3	4	5	6	7	8	9	10	11	12	13	14	15	16	17	18	19	20	21	22	23	24	25	26	27	28	29	30	31							<div>June 2024</div> <table><tr><th>S</th><th>M</th><th>T</th><th>W</th><th>T</th><th>F</th><th>S</th></tr><tr><td></td><td></td><td></td><td></td><td></td><td></td><td>1</td></tr><tr><td>2</td><td>3</td><td>4</td><td>5</td><td>6</td><td>7</td><td>8</td></tr><tr><td>9</td><td>10</td><td>11</td><td>12</td><td>13</td><td>14</td><td>15</td></tr><tr><td>16</td><td>17</td><td>18</td><td>19</td><td>20</td><td>21</td><td>22</td></tr><tr><td>23</td><td>24</td><td>25</td><td>26</td><td>27</td><td>28</td><td>29</td></tr><tr><td>30</td><td></td><td></td><td></td><td></td><td></td><td></td></tr></table> <div>6</div>	S	M	T	W	T	F	S							1	2	3	4	5	6	7	8	9	10	11	12	13	14	15	16	17	18	19	20	21	22	23	24	25	26	27	28	29	30							<div>10 June</div> <div>Last Day of School for Students</div>
S	M	T	W	T	F	S																																																																																															
					1	2																																																																																															
3	4	5	6	7	8	9																																																																																															
10	11	12	13	14	15	16																																																																																															
17	18	19	20	21	22	23																																																																																															
24	25	26	27	28	29	30																																																																																															
31																																																																																																					
S	M	T	W	T	F	S																																																																																															
						1																																																																																															
2	3	4	5	6	7	8																																																																																															
9	10	11	12	13	14	15																																																																																															
16	17	18	19	20	21	22																																																																																															
23	24	25	26	27	28	29																																																																																															
30																																																																																																					
<div>4 January</div> <div>Last Day</div> <div>7 January - 11 January</div> <div>Mid-Semester Vacation</div> <div>14 January</div> <div>Second Semester - School Resumes</div> <div>28 January</div> <div>Long Weekend</div>	<div>January 2024</div> <table><tr><th>S</th><th>M</th><th>T</th><th>W</th><th>T</th><th>F</th><th>S</th></tr><tr><td></td><td>1</td><td>2</td><td>3</td><td>4</td><td>5</td><td>6</td></tr><tr><td>7</td><td>8</td><td>9</td><td>10</td><td>11</td><td>12</td><td>13</td></tr><tr><td>14</td><td>15</td><td>16</td><td>17</td><td>18</td><td>19</td><td>20</td></tr><tr><td>21</td><td>22</td><td>23</td><td>24</td><td>25</td><td>26</td><td>27</td></tr><tr><td>28</td><td>29</td><td>30</td><td>31</td><td></td><td></td><td></td></tr></table> <div>17</div>	S	M	T	W	T	F	S		1	2	3	4	5	6	7	8	9	10	11	12	13	14	15	16	17	18	19	20	21	22	23	24	25	26	27	28	29	30	31																																																													
S	M	T	W	T	F	S																																																																																															
	1	2	3	4	5	6																																																																																															
7	8	9	10	11	12	13																																																																																															
14	15	16	17	18	19	20																																																																																															
21	22	23	24	25	26	27																																																																																															
28	29	30	31																																																																																																		



SCHOOL TIMING

S.Y. 2023-2024

GRADE 6-12	
Period	Time
1	7:00 a.m. – 7:45 a.m.
2	7:45 a.m. – 8:30 a.m.
3	8:30 a.m. – 9:15 a.m.
Break	9:15 a.m. – 9:45 a.m.
4	9:45 a.m. – 10:30 a.m.
5	10:30 a.m. – 11:15 a.m.
Break	11:15 a.m. – 11:30 a.m.
6	11:30 a.m. – 12:15 p.m.
7	12:15 p.m. – 1:00 p.m.



BOOK LIST

S.Y. 2023-2024

GRADE SEVEN

#	SUBJECT	PUBLISHER	ISBN	BOOK TITLE
1	English	Harcourt	9780358416401	HMH Literature G/7
2	English	Sadlier	9781421785073	VOCABULARY WORKSHOP – Level – B
3	English	Harcourt	978-0358264149	HMH Into Literature Grammar G/7
4	English	Cambridge	9780521705822	Real 3 – Listening And Speaking
5	English	Pearson Longman	9781405863957	The Outsiders
6		Longman Literature	058206015X	Pygmalion by Bernard Show
7	Math	Oxford	978 138 201875 3	Complete Mathematic Lower Secondary Book – 8 Grade – 7
8	Biology	Nelson Thrones	9781408509203	New Biology For You
9	Chemistry	Nelson Thrones	9781408509210	New Chemistry For You
10	Physics	Nelson Thrones	9781408509227	New Physics For You
11	Geography	Oxford University	978-1-4085-2317-9	Nelson Key Geography Connections- 5 th Edition
12	History	Hodder Education	9780719549380	Discovering The Past Y7
13	ICT	Warak		Right Click computer – Grade 7



مدارس سعود العالمية
Saud International School



Available at:

- Samer Bookstore

7721 Prince Abdulaziz Ibn Musaid Ibn Jalawi St.

As Sulimaniyah 2221, Riyadh 12621



Scan me!





SCHOOL UNIFORM

S.Y. 2023–2024

Dear Parents,

The School Dress code from Grade 6 to 12:

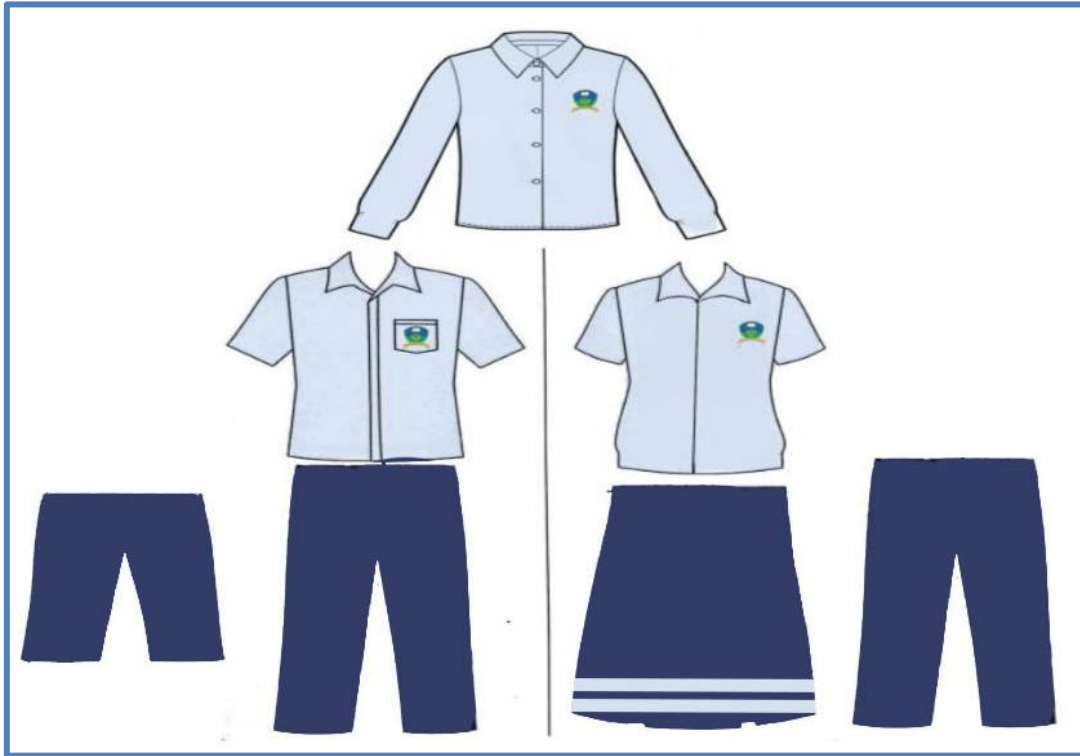
- ✓ For girls: Skirt or navy blue trouser and the school's light blue shirt.
- ✓ For boys: Navy blue trouser and the school's light blue shirt.

All students:

- ✓ Must wear black shoes with white, black, or dark blue socks only.
- ✓ Are required to come to school with a clean uniform; students with a dirty or ripped uniform will be sent home to change.

Female students:

- ✓ Leggings or any tight pants/shorts are strictly not allowed.
- ✓ Not allowed to wear makeup/ nail polish/accessories or jewelry. The school will not be held liable if belongings are misplaced/stolen/lost.
- ✓ Dyeing of Hair with unusual colors is strictly prohibited.



Available at:

- **Ahlaam Uniforms**
3849 Ash Shaikh Abdullah Ak Anqari
Al Warud, Riyadh 12252







Scan me!



SCHOOL SUPPLIES LIST

S.Y. 2023-2024

GRADE 6 TO 12

	Classroom requirements such as notebooks, stationary items and other requirements will be announced to the child during the first week of school by their subject teachers.
	Textbooks / Copybooks – <u>Please cover all with clear plastic and label with name / grade/ section on the <i>top right hand corner</i>. Also, please label all stationary items.</u>
	Lunch Breaks – Everyday your child will have two recesses. Please provide adequate healthy food / drinks such as fruit, vegetable sticks, and juice packed in a lunch box that is labelled with your child's name. The school canteen offers a selection of items for purchase.
	School and P.E. Uniform : Ahlaam Uniforms 3849. Ash Shaikh Abdullah Ak Anqari Al Warud, Riyadh 12252



ACCESS TO REPORT CARDS

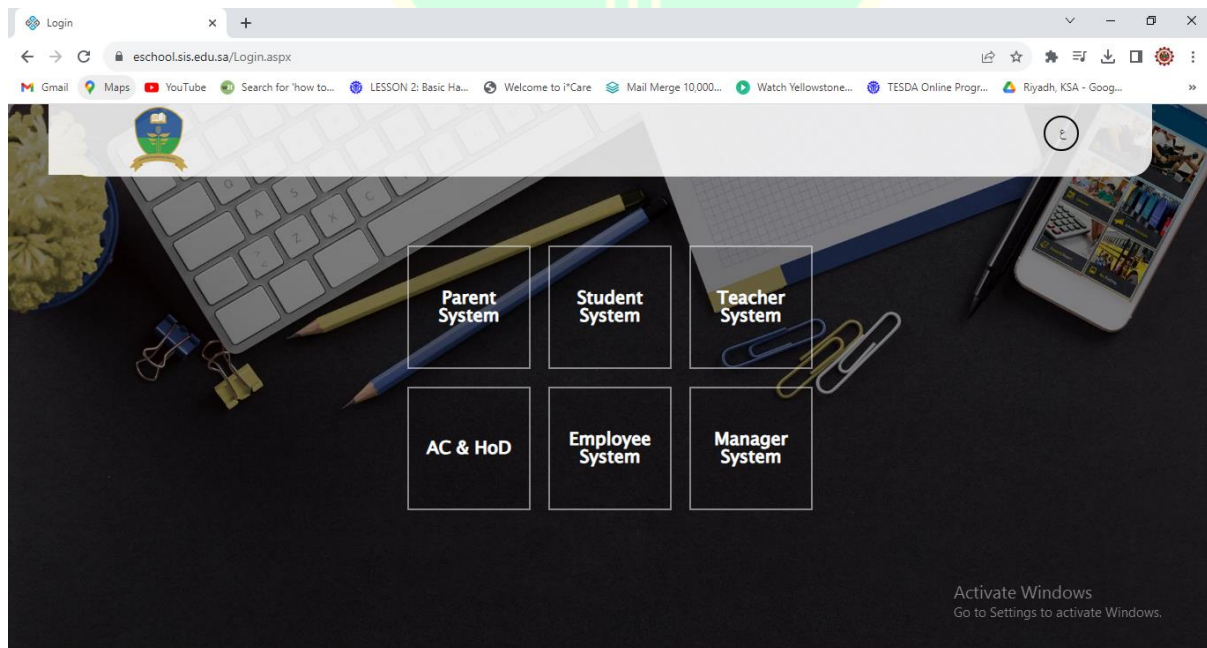
Introduction

The objective of this document is to provide a step by step guideline for target Students to access the Report Card through Saud International School website.

Steps

Report Card is accessible through Saud International School website. Students must use the website to access report card by navigating to <https://eschool.sis.edu.sa/Login.aspx>

1. Click on “Parent System”





2. If it's the first time to login, click on "Log in for the first time please click here"

Login

eschoolsis.edu.sa/Login.aspx?ReturnUrl=%2fparent%2f

eSchool Login

Parent System

Username

Password

☐ KEEP ME LOGGED IN

[FORGOT PASSWORD?](#)

Sign in for the first time Press here

Log in for the first time Please click here

3. Enter the national number of your parent inside the popup field, then you will receive a message from Saud International School with username and password.

Login

eschoolsis.edu.sa/Login.aspx?ReturnUrl=%2fparent%2f

Please Enter your national number

Save Cancel

Username

Password

☐ KEEP ME LOGGED IN

[FORGOT PASSWORD?](#)

Sign in for the first time Press here

Log in for the first time Please click here



4. Enter the username and password received, then click the arrow

5. Once logged-in, click on Mid-Term Certificate under Marks Report.



6. Confirm the academic year, semester and student name then Click search

Parent System

WELCOME Mohammad Naimi

MID-Term Certificate

Search Options

Academic Year
e.g. "2015-2014"
2020-2021

Semester
e.g. "First Semester"
First Semester

Student name
e.g. "ahmad"
Adel Naimi

Search

Finally, you can see the report card down.





LMS GUIDELINES

LMS (Learning Management System) is the school's web page where we post announcements and memos. You need to check it out regularly for updates.

- How to access LMS

1. Load the school website <https://elms.sis.edu.sa/>
2. Click on login.

The screenshot shows the Saud International School LMS website. The browser address bar displays <https://elms.sis.edu.sa/>. The page features a sidebar with a 'MAIN MENU' containing 'Site news', a 'NAVIGATION' section with 'Home', 'Site news', and 'Courses', and a 'LOGIN' section with fields for 'Username' and 'Password', a 'Remember username' checkbox, and a 'Log in' button. The main content area is titled 'Site news' and displays two announcements: 'Grade 5 Summer Pack 2023' and 'Grade 4 Summer Pack 2023', both by School Administration. The 'Grade 5 Summer Pack 2023' announcement includes links to download PDF files for Arabic, English, and Math. A 'CALENDAR' for August 2023 is visible on the right, showing dates from Sunday to Saturday. At the bottom right, there is a 'Forums' section and a Windows watermark.



SCHOOL CONTACT DETAILS

Administration Office Hours:

7:00 am to 2:15 pm (Sunday – Thursday)

Elementary, Junior High & Senior High Schools Telephone:

+966 920002877

Extension Numbers:

Reception 221 – 231

Registration: 295

Accounting: 302

Emails:

Pre-School: may.saleh@sis.edu.sa

Head of Elementary (Girls): nouf.ramadan@sis.edu.sa

Head of Middle & High School (Girls): hind.alsahli@sis.edu.sa

Head of Elementary (Boys): saleh.aljibali@sis.edu.sa

Head of Middle School (Boys): mohammed.alamri@sis.edu.sa

Head of High School (Boys): mohammed.mahzari@sis.edu.sa

Address:

- ✓ **Postal:** Saud International School
PO BOX 59772 Riyadh 11535
Kingdom of Saudi Arabia
- ✓ **Physical:** Saud International School
Hamdan Street, Sulaimaniyah,
Riyadh, Kingdom of Saudi Arabia



Scan me!

Scan the QR code